

## Why Choose **SSV** series?

- ✓ **SSV = Sony SuperVision**
- ✓ **Sony CCD inside the SSV cameras guarantee Superb Vision**
- ✓ **1year Guarantee with Advance Exchange 1to1 replacement**
- ✓ **Made in Taiwan (Not China Mainland)**
- ✓ **High Quality and Long-Life Infra-Red LED illuminator in IR Cameras model (Life time more than 10,000hours or 3years with average 9hours/day)**
- ✓ **High Signal to Noise Ratio enable long distance transmission over coaxial cable (more than 400mtr using RG-6)**
- ✓ **Free CMS (Centralized Management Software)**
- ✓ **Remote Viewing players for Blackberry, iPhone, Android, Symbian, Windows Mobile, Mac, PC**

# SSV-105

## DOME COLOUR CAMERA

1/3" SONY CCD, 420TVL



## Specifications

System	PAL
Pick-up Device	1/3" Sony Super HAD® CCD
Active Picture Elements	PAL: 512(H) x 582(V)
Horizontal Resolution	420TV Lines / 520TV Lines (HQ)
Video Output	BNC Composite : 1.0Vpp / 75 Ω
Minimum Illumination	0.1 Lux F 2.0
Electric Shutter	1/50 to 1/100,000 sec
S/N Ratio	More than 48dB
Lens	Built-in Lens 4mm
Base Color	Black
Operation Temperature	-10°C ~ +50°C
Power Supply	DC 12Volt
Current	120mA
Dimensions	102 x 61mm
Weight	120grams

# SSV-115

## IR DOME COLOUR CAMERA

1/3" SONY CCD, 420TVL



## Specifications

System	PAL
Pick-up Device	1/3" Sony Super HAD® CCD
Active Picture Elements	PAL: 512(H) x 582(V)
Horizontal Resolution	420TV Lines / 520TV Lines (HQ)
Video Output	BNC Composite : 1.0Vpp / 75 Ω
Minimum Illumination	0.1 Lux F 2.0 (0 Lux IR ON)
Electric Shutter	1/50 to 1/100,000 sec
S/N Ratio	More than 48dB
Infra Red	20pcs LED (15mtr distance)
IR Wave Length	850nm
Lens	Built-in Lens 4mm
Base Color	Beige
Operation Temperature	-10°C ~ +50°C
Power Supply	DC 12Volt
Current	120mA (IR OFF) / 180mA (IR ON)
Dimensions	115 x 75mm
Weight	150grams

# SSV-108

## IR BULLET COLOUR CAMERA

1/3" SONY CCD, 420TVL



## Specifications

<b>System</b>	PAL
<b>Pick-up Device</b>	1/3" Sony Super HAD® CCD
<b>Active Picture Elements</b>	PAL: 512(H) x 582(V)
<b>Horizontal Resolution</b>	420TV Lines / 520TV Lines (HQ)
<b>Video Output</b>	BNC Composite : 1.0Vpp / 75 Ω
<b>Minimum Illumination</b>	0.1 Lux F 2.0 (0 Lux IR ON)
<b>Electric Shutter</b>	1/50 to 1/100,000 sec
<b>S/N Ratio</b>	More than 48dB
<b>Infra Red</b>	35pcs LED (18mtr distance)
<b>IR Wave Length</b>	850nm
<b>Lens</b>	Built-in Lens 4mm (or 6mm)
<b>Colour</b>	Beige
<b>Operation Temperature</b>	-10°C ~ +50°C
<b>Power Supply</b>	DC 12Volt
<b>Current</b>	500mA
<b>Dimensions</b>	75(dia) x 110(L) mm
<b>Weight</b>	400grams

# SSV-127

## IR OUTDOOR IP-66 COLOUR CAMERA

1/3" SONY CCD, 420TVL



## Specifications

<b>System</b>	PAL
<b>Pick-up Device</b>	1/3" Sony Super HAD® CCD
<b>Active Picture Elements</b>	PAL: 512(H) x 582(V)
<b>Horizontal Resolution</b>	420TV Lines / 520TV Lines (HQ)
<b>Video Output</b>	BNC Composite : 1.0Vpp / 75 Ω
<b>Minimum Illumination</b>	0.1 Lux F 2.0 (0 Lux IR ON)
<b>Electric Shutter</b>	1/50 to 1/100,000 sec
<b>S/N Ratio</b>	More than 48dB
<b>Infra Red</b>	91pcs LED (30mtr distance)
<b>IR Wave Length</b>	850nm
<b>Lens</b>	Built-in Lens 6mm
<b>Colour</b>	Beige
<b>Operation Temperature</b>	-10°C ~ +50°C
<b>Power Supply</b>	DC 12Volt
<b>WeatherProof Protection</b>	IP-66 Classification
<b>Dimensions</b>	147(W) x 149(H) x 380(D) mm
<b>Weight</b>	2200grams

# SSV-125

## IR OUTDOOR COLOUR CAMERA

1/3" SONY CCD, 420TVL



## Specifications

System	PAL
Pick-up Device	1/3" Sony Super HAD® CCD
Active Picture Elements	PAL: 512(H) x 582(V)
Horizontal Resolution	420TV Lines
Video Output	BNC Composite : 1.0Vpp / 75 Ω
Minimum Illumination	0.1 Lux F 2.0 (0 Lux IR ON)
Electric Shutter	1/50 to 1/100,000 sec
S/N Ratio	More than 48dB
Infra Red	56pcs LED (25mtr distance)
IR Wave Length	850nm
Lens	Built-in Lens 6mm (or 8mm)
Colour	Beige
Operation Temperature	-10°C ~ +50°C
Power Supply	DC 12Volt
WeatherProof Protection	IP-33 Classification
Dimensions	145(W) x 113(H) x 280(D) mm
Weight	1000grams

# SSV-001

## STANDARD COLOUR CAMERA

1/3" SONY CCD, 420TVL



## Specifications

<b>System</b>	PAL
<b>Pick-up Device</b>	1/3" Sony Super HAD® CCD
<b>Active Picture Elements</b>	PAL: 512(H) x 582(V)
<b>Horizontal Resolution</b>	420TV Lines
<b>Video Output</b>	BNC Composite : 1.0Vpp / 75 Ω
<b>Minimum Illumination</b>	0.2 Lux F 2.0
<b>White Balance</b>	Auto White Balance 2500°K ~ 9500°K
<b>S/N Ratio</b>	More than 48dB
<b>Back Light Compensation</b>	Auto
<b>AGC</b>	Auto
<b>Gamma Correction</b>	0.45
<b>Colour</b>	Beige
<b>Operation Temperature</b>	-10°C ~ +50°C
<b>Power Supply</b>	12VDC
<b>Construction</b>	Aluminium
<b>Dimensions</b>	57(W) x 47(H) x 93(L) mm
<b>Weight</b>	230 grams

# SSV-114

## SPY CAMERA

1/3" SONY CCD, 420TVL, PIN-HOLE



## Specifications

System	PAL
Pick-up Device	1/3" Sony Super HAD® CCD
Active Picture Elements	PAL: 512(H) x 582(V)
Horizontal Resolution	420TV Lines
Video Output	BNC Composite : 1.0Vpp / 75 Ω
Minimum Illumination	0.1 Lux F 2.0
Electric Shutter	1/50 to 1/100,000 sec
S/N Ratio	More than 48dB
Lens	PIN HOLE Lens 4.3mm
Base Color	Black
Operation Temperature	-10°C ~ +50°C
Power Supply	DC 12Volt
Current	120mA
Dimensions	35(W) x 35(H) x 15(D) mm
Weight	50grams

# ICH-605

## OUTDOOR HOUSING



## Specifications

Material	Aluminium
Construction	Aluminium with plastic enc caps
Mounting	From Bottom
Thread Size	¼" – 20 UNC
Usable Camera and Lens	Max. 260mm total length
Window Size	74(W) x 63(H) mm
Window Material	5mm thick plate glass
Dimension	142(W) x 115(H) x 370(D) mm
Weight	1,33Kgs
Color	Beige

# IHB-205N

## ENCLOSURE WALL BRACKET



## Specifications

Material	Aluminium
Color	BEIGE Baked Enamel Finish
Dimensions	83(W) x 255(H) x 99(D) mm
Maximum Load	10Kgs
Swivel Angle	360° rotation
Tilt Angle	90°
Weight	600grams

# SSV-3274B

## DIGITAL VIDEO RECORDER

4 CHANNEL, REAL-TIME, H-264 Baseline



## Specifications

Display Resolution	PAL 704 x 576 , real time per channel
Compression	H.264 Baseline (Video) / ADPCM (Audio)
Video Input	4 Channel (BNC)
Audio Input	4 Channel (RCA)
Video Output	1 x BNC Composite (1.0Vpp / 75 Ω) & 1 x SVGA (1280*1024 pixel)
Display Frame Rate	Real-Time 120fps(NTSC) / 100fps(PAL) CIF
Record Frame Rate	Real-Time 120fps(NTSC) / 100fps(PAL) CIF
Operating Mode	MULTIPLEX (live display, record, playback, backup, network)
Record Mode	Continuous / Schedule / Alarm / Motion Detect
Playing Mode	1Ch-4Ch Simultaneously
Searching Mode	By Time/Event/Channel with Hair-Line
HDD	500 GB SATA HDD
Alarm Input / Output	4 Channel input / 1 Channel output (NC , NO relay)
Network	10/100MBps ; Protocol TCP/IP, HTTP, UDP, NTP, DHCP, DDNS, FTP
Remote Control	Yes ; include 1 x IR Remote Control
USB Mouse Control	Optional
Media Back Up	1 x USB 2.0 port for Flash Disk or External HDD backup
PTZ Control	RS-485 PELCO-D
Operation Temperature	0°C ~ +40°C
Power Supply	DC 12Volt / 5A
Weight	3.0 Kgs
Dimensions	315 x 224 x 52mm

# SSV-3278B

## DIGITAL VIDEO RECORDER

8 CHANNEL, REAL-TIME, H-264 Baseline



## Specifications

Display Resolution	PAL 704 x 576 , real time per channel
Compression	H.264 Baseline (Video) / ADPCM (Audio)
Video Input	8 Channel (BNC)
Audio Input	8 Channel (RCA)
Video Output	1 x BNC Composite (1.0Vpp / 75 Ω) & 1 x SVGA (1280*1024 pixel)
Display Frame Rate	Real-Time 240fps(NTSC) / 200fps(PAL) CIF
Record Frame Rate	Real-Time 240fps(NTSC) / 200fps(PAL) CIF
Operating Mode	MULTIPLEX (live display, record, playback, backup, network)
Record Mode	Continuous / Schedule / Alarm / Motion Detect
Playing Mode	1Ch-8Ch Simultaneously
Searching Mode	By Time/Event/Channel with Hair-Line
HDD	500 / 1000 GB SATA HDD
Alarm Input / Output	4 Channel input / 1 Channel output (NC , NO relay)
Network	10/100MBps ; Protocol TCP/IP, HTTP, UDP, NTP, DHCP, DDNS, FTP
Remote Control	Yes ; include 1 x IR Remote Control
USB Mouse Control	Include
Media Back Up	1 x USB 2.0 port for Flash Disk or External HDD backup
PTZ Control	RS-485 PELCO-D
Operation Temperature	0°C ~ +40°C
Power Supply	DC 12Volt / 5A
Weight	3.0 Kgs
Dimensions	315 x 224 x 52mm

# SSV-3286HBM

## DIGITAL VIDEO RECORDER

16 CHANNEL, REAL-TIME,  
H-264 Baseline



## Specifications

Display Resolution	PAL 704 x 576 , real time per channel
Compression	H.264 Baseline (Video) / ADPCM (Audio)
Video Input	16 Channel (BNC)
Audio Input	16 Channel (RCA)
Video Output	2 x BNC (Main/Spot) ; 1xVGA (1280*1024p) ; 1xHDMI (1920*1080p)
Display Frame Rate	Real-Time 480fps(NTSC) / 400fps(PAL) CIF
Record Frame Rate	Real-Time 480fps(NTSC) / 400fps(PAL) CIF
Operating Mode	MULTIPLEX (live display, record, playback, backup, network)
Record Mode	Continuous / Schedule / Alarm / Motion Detect
Playing Mode	1Ch-16Ch Simultaneously
Searching Mode	By Time/Event/Channel with Hair-Line
HDD	1000 / 2000 GB SATA HDD
Alarm Input / Output	16 Channel input / 4 Channel output (NC , NO relay)
Network & Mobile Streaming	10/100Mbps HTTP,FTP (File Sharing copy HDD Files), PPoE,DHCP,DDNS,UPnP & 3G/3,5G Symbian,iPhone,BlackBerry,Android,WindowsMobile
Remote Control	Yes ; include 1 x IR Remote Control
USB Mouse Control	Include
Media Back Up	1 x USB 2.0 port for Flash Disk or External HDD backup
PTZ Control	RS-485 PELCO-D
Operation Temperature	0°C ~ +40°C
Power Supply	DC 12Volt / 5A
Weight	4.0 Kgs
Dimensions	436 x 339 x 55mm

# SSV-2420(RX) / SSV-2425 (TX)

DIGITAL WIRELESS MEDIA  
TRANSMISSION

(AUDIO, VIDEO, PTZ CONTROL)



## Specifications

Security Protection	Digital Data Encryption – can not view by other device
Immunity	Robust anti interference (WiFi, Bluetooth, Microwave oven, Cordless Phone)
Pairing	Auto Pairing automatically with ID
Transmission Distance	100mtr (open site)
AV Port	Video x1 ; Audio x2 (L/R)
Control PTZ Port	RS-485 protocol PELDO-D
Video Compression	MPEG-4
Video Resolution	720 x 576p @Real-Time 30fps
Data Rate	Up to 12MBps
Power Supply	DC 12V / 1Amp
RF Transmission Power	100mW

# SSV-5905P

**OUTDOOR LONG DISTANCE DIGITAL  
WIRELESS MEDIA TRANSMISSION**

**(AUDIO, VIDEO, PTZ CONTROL)**

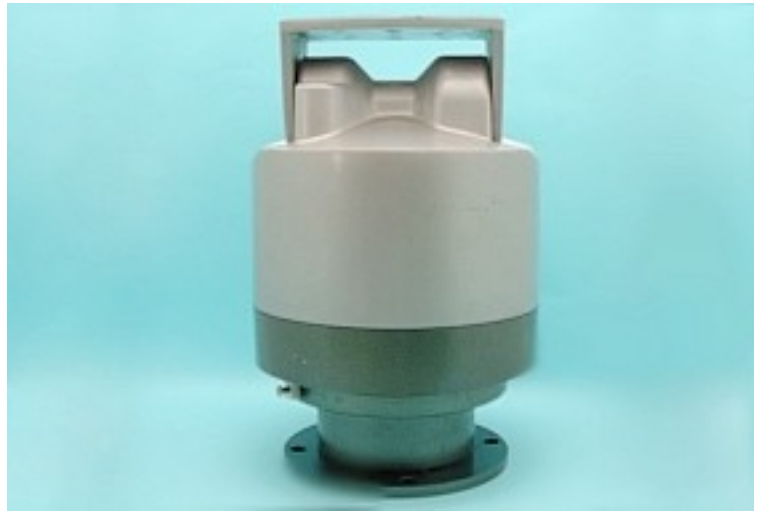


## Specifications

Security Protection	Digital Data Encryption – can not view by other device
Immunity	Robust anti interference (WiFi, Bluetooth, Microwave oven, Cordless Phone)
Pairing	Auto Pairing automatically with ID
Transmission Distance	4000mtr (open site)
AV Port	Video x1 ; Audio x2 (L/R)
Control PTZ Port	RS-485 protocol PELDO-D
Video Compression	MPEG-4
Video Resolution	720 x 576p @Real-Time 30fps
Data Rate	Up to 12Mbps
Power Supply	DC 12V / 1Amp
RF Transmission Power	1000mW

# PT-301

## OUTDOOR PAN/TILT MOTOR



## Specifications

Max. Load	38 Kgs
Material / Construction	Aluminium Alloy Die Casting
PAN	355°
TILT	Up 30° / Down 40°
Rotational Speed	6° per second
Duty Cycle	Pan : Continuous / Tilt : Intermittent
Seals	Quad ring and gasket seals for all-weather protection
Operating Voltage	220 VAC
Colour / Finish	Silver Gray / Baked Enamel Finish
Dimension	277 x 196 mm
Weight	8 Kgs

# PT-302

## INDOOR PAN/TILT MOTOR



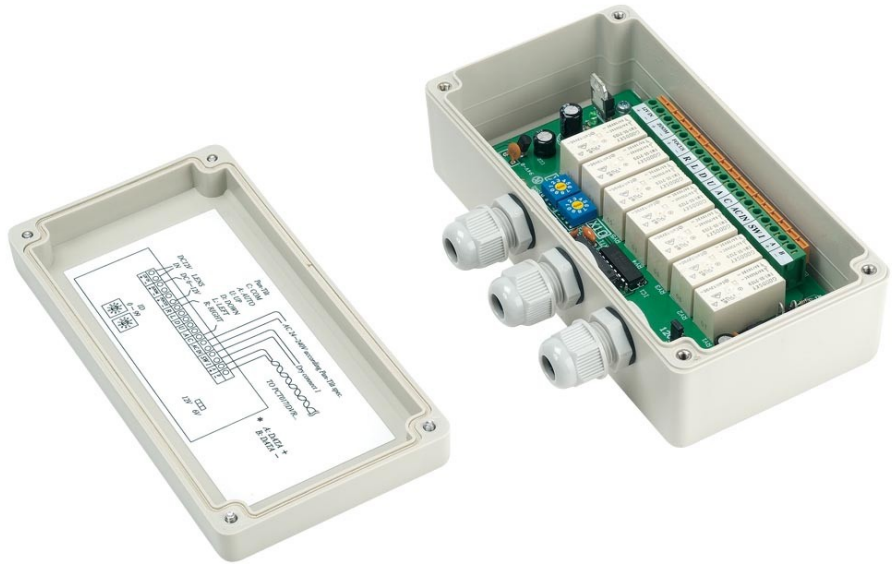
## Specifications

Max. Load	7 Kgs
Material	Plastic Steel
PAN	355°
TILT	100°
Rotational Speed	5° per second
Dimension	179(L) x 115(W) x 180(H) mm
Weight	2 Kgs

# RD-011N

## RECEIVER / DRIVER

PELCO-D Protocol  
AUX RELAY



100 CHANNELS PTZ WITH 2-wires only

## Specifications

Transmission	RS-485
Transmission Range	1200 meter
Control	Pan / Tilt / Zoom / Focus / AUX
Pan/Tilt Voltage	AC 110V / 220V / 24V
Zoom/Focus Voltage	DC 12V or 6V (selectable)
RELAY Contact Current Rating	24VDC-2Amp / 220VAC-1Amp
Operating Voltage	12VDC
Power Consumption	120mA (max)
Dimension (W x H x D)	138 x 77 x 28 mm